



# atvise® References

a selection of customers and customer projects



# References.



© Certec EDV GmbH, Austria

[www.certec.at](http://www.certec.at)

## Revision History

Revision	Date	Author	Comment	Status
1.0	21.04.2016	Pauschenwein		draft

Author: **Pauschenwein Magdalena**

Telephone: **+43 (0) 2682 75 799 - 0**

E-mail: **info@certec.at**

## Contents

<b>1</b>	<b>Introduction .....</b>	<b>7</b>
1.1	Structure .....	7
<b>2</b>	<b>Building Automation: Customers &amp; Projects .....</b>	<b>8</b>
2.1	A2i .....	9
2.2	Austrian Airlines with Csernohorszky .....	10
2.3	Deutsche Bank with Leicom .....	11
2.4	Lippuner Energie- und Metallbautechnik AG .....	12
2.5	Siemens Switzerland AG .....	13
2.6	Simconex AG .....	14
2.7	Tessmar Gebäudeleittechnik GmbH .....	15
2.8	Various Building Automation References .....	16
2.8.1	AutomationNext .....	16
2.8.2	Herrmann GmbH & Co KG .....	16
2.8.3	Nossol Automatisierung GmbH .....	17
<b>3</b>	<b>Energy: Customers &amp; Projects .....</b>	<b>18</b>
3.1	Bachmann electronic GmbH – Wind Power Scada .....	19
3.2	Burkhardt GmbH .....	20
3.3	Danfoss GmbH .....	21

3.4	Wien Energie GmbH.....	22
3.5	Hoval AG.....	23
3.6	Various Energy References.....	24
3.6.1	Evonik GmbH.....	24
3.6.2	Vizimax Inc.....	24
<b>4</b>	<b>Infrastructure: Customers &amp; Projects.....</b>	<b>25</b>
4.1	Automation 3000 AG.....	26
4.2	Indect Electronics GmbH.....	27
4.3	Sisag AG Altdorf.....	28
4.4	Various Infrastructure References.....	29
4.4.1	ACG Autcomp Grischa AG.....	29
4.4.2	Ascom GmbH.....	29
4.4.3	Marti Technik AG.....	30
4.4.4	PKE GmbH.....	30
<b>5</b>	<b>Logistic: Customers &amp; Projects.....</b>	<b>31</b>
5.1	Assa Abloy Entrance Systems Germany GmbH.....	32
5.2	Various Logistic references.....	33
5.2.1	Knapp AG.....	33
5.2.2	SSI Schäfer.....	33
<b>6</b>	<b>Machinery &amp; Plant Engineering: Customers &amp; Projects.....</b>	<b>34</b>

6.1	Alba Group .....	35
6.2	Andritz AG .....	36
6.3	SAA Engineering GmbH .....	37
6.4	Voith Paper GmbH & Co KG.....	38
6.5	Various Machinery & Plant Engineering References.....	39
6.5.1	Backhus GmbH.....	39
6.5.2	Franke GmbH.....	39
<b>7</b>	<b>Oil &amp; Gas / Mining: Customers &amp; Projects .....</b>	<b>40</b>
7.1	EEP – Elektro Elektronik Pranjic.....	41
7.2	Offshore Systems .....	42
<b>8</b>	<b>Water &amp; Wastewater: Customers &amp; Projects.....</b>	<b>43</b>
8.1	Demont Engineering GmbH.....	44
8.2	Ellab d.o.o.....	45
8.3	Endress + Hauser .....	46
8.4	KSC GmbH and RHC Automation with Water Association Wulkatal .....	47
<b>9</b>	<b>Various: Customers &amp; Projects.....</b>	<b>48</b>
9.1	Bachmann webMI Pro.....	49
9.2	Hilscher Ges. Für Systemautomation mbH .....	50
9.3	ITA – Institute for Textile Technology and University Aachen.....	51
9.4	Various References .....	52

---

9.4.1	ILS Technology.....	52
9.4.2	Nxt Control GmbH .....	52
9.4.3	Softing AG .....	53
9.4.4	Vipa GmbH.....	53
9.4.5	Weiermayer Solutions GmbH.....	54

## 1 Introduction

The atvise® product line has proved its capabilities and its reliabilities in many projects on every continent. It has been successfully used by system integrators and product vendors in nearly any field of the automation industry.

The following selection of atvise® references shall give an impression of our customers and their projects. Additionally we listed some of the product vendors who already use atvise® technology within their products, based on the our product atvise® SDK.

This document may not be distributed to other parties without the written permission of Certec EDV GmbH.

### 1.1 Structure

The atvise® product line can be used in multiple fields of businesses. For the easier finding of relevant references, we decided to sort our projects in different industries and in alphabetical order.



Building Automation



Machinery & Plant Engineering



Infrastructure



Water / Wastewater



Energy



Oil&Gas / Mining



Logistic



Various

## 2 Building Automation: Customers & Projects



# Building Automation



2.1 A2i

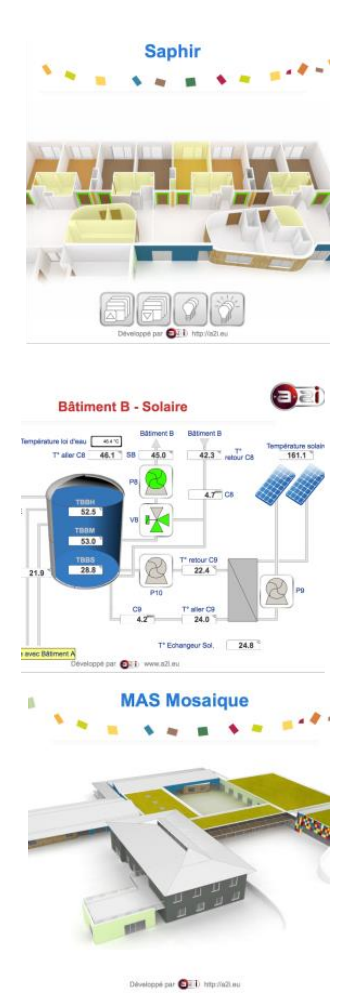


**System Integrator:** A2i  
**Industry:** Building Automation  
**Project:** Various  
**Product:** atvise® webMI2ADS  
**PLCs:** Beckhoff  
**Final customer:** Various



The company a2i is a system integrator and engineering company. A2i have been active for many years in the field of building automation and are therefore able to offer complete solutions for the overall managements of buildings.

The plant screenshots are an extract of the projects of A2i. atvise hereby realizes the visualization in pure Web technology and presents these in a standard web browser. In the A2i projects Beckhoff controllers are used, which are equipped with the atvise solution webMI2ADS.



## 2.2 Austrian Airlines with Csernohorszky



**System Integrator:** Ing. Emmerich Csernohorszky

**Industry:** Building Automation

**Project:** Scada for BA

**Product:** atvise® scada

**PLCs:** nxtControl

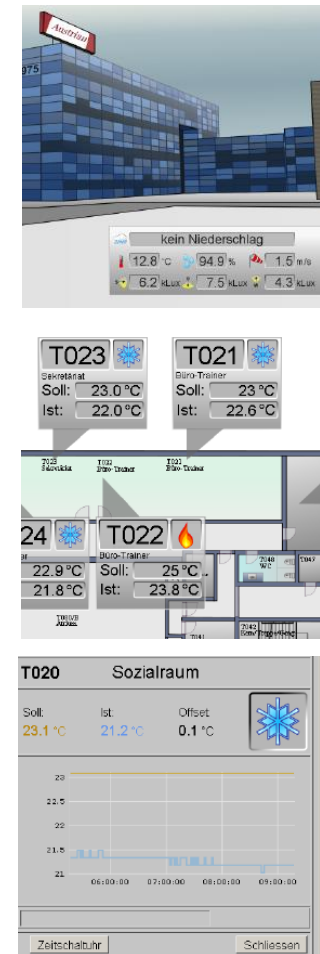
**Final customer:** Austrian Airlines



Vienna Airport (Schwechat), Austria, 2009

In collaboration with nxtControl GmbH and Certec, Csernohorszky installed a state-of-the-art building automation system for 140 offices and training rooms of a new training center.

The system includes a room reservation application and visualization based on atvise. With that, any operator with the necessary rights has full control from every place at Austrian Airlines.



### 2.3 Deutsche Bank with Leicom



**System Integrator:** Leicom AG  
**Industry:** Building Automation  
**Project:** Station for room control  
**Product:** atvise® SDK  
**PLCs:** Bernecker&Rainer  
**Final customer:** Deutsche Bank



Frankfurt, Germany, 2008 - 2010

Frankfurt - the highest building in the city - every room in every floor can be controlled via 140 control terminals.

This was made possible by integrating an atvise® webMI server into Bernecker & Rainer PLCs. The realization of the project was done by the Swiss company Leicom.



## 2.4 Lippuner Energie- und Metallbautechnik AG



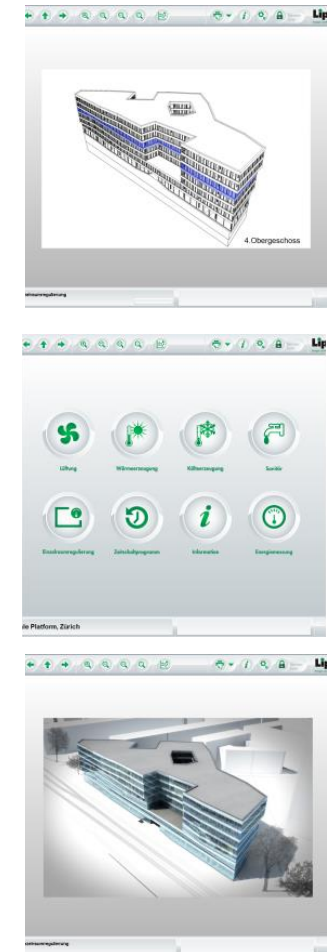
**System Integrator:** Lippuner AG  
**Industry:** Building Automation  
**Project:** Bank Building  
**Product:** atvise® scada  
**PLCs:** Various  
**Final customer:** Swiss Bank



Zürich, Switzerland, 2010

Lippuner Energie- und Metallbautechnik AG successfully offers atvise within their building automation segment.

This project, a building control system of a Swiss bank has been implemented with atvise® scada. The screen images below demonstrate the unrestricted customization possibilities of the graphical HMI interface of atvise®.



## 2.5 Siemens Switzerland AG

**SIEMENS**

Building Technologies

**System Integrator:** Siemens Schweiz AG

**Industry:** Building Automation

**Project:** Room controls

**Product:** atvise® SDK

**PLCs:** Siemens

**Final customer:** Various



At Siemens Switzerland Ltd, Building Technologies Division atvise® webMI is used within building automation, where it is deployed only project related in panels and Ipads to control and monitor room controls.

„Intuitive user interface with touch panels significantly simplifies the room controlling and by the use of atvise® software we can fulfill various requirements. We were convinced by the consistant usage of open standards, which we at Siemens persue for many years and the simplicity of the atvise® software“, says Pius Widmer, Global Portfolio Manager Room Solutions at Siemens.

## 2.6 Simconex AG



**System Integrator:** Simconex AG

**Industry:** Building Automation

**Project:** Headquarter Electrosuisse

**Product:** atvise® scada

**PLCs:** Beckhoff

**Final customer:** Electrosuisse



All light and shading controllers are implemented with Beckhoff and EnOcean technology. Number of physical data points: approx. 3200. atvise® scada is used as the control system. All substations (39 pcs. of Beckhoff PLCs) are displayed in the visualization via OPC UA.



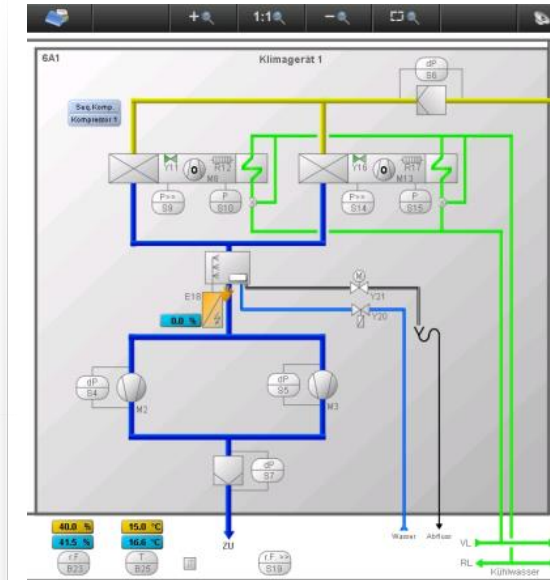
## 2.7 Tessmar Gebäudeleittechnik GmbH



**System Integrator:** Tessmar GmbH  
**Industry:** Building Automation  
**Project:** Server Centre Hannover  
**Product:** atvise® scada  
**PLCs:** Various  
**Final customer:** Various



Tessmar Gebäudeleittechnik GmbH is a medium sized company in the business of building services. It plans and creates measuring or engineering systems.



## 2.8 Various Building Automation References

### 2.8.1 AutomationNext



<b>System Integrator:</b>	Nossol Automatisations GmbH
<b>Industry:</b>	Building Automation
<b>Project:</b>	Various
<b>Product:</b>	atvise® SDK
<b>PLCs:</b>	Various
<b>Final customer:</b>	Various



MMC V2 is a software solution where a framework provides the integration of different systems and devices into a unified, easy to use platform. This easy to learn software allows time and cost efficient implementation of projects in the sector of building automation.

### 2.8.2 Herrmann GmbH & Co KG



<b>System Integrator:</b>	Herrmann GmbH & Co KG
<b>Industry:</b>	Building Automation
<b>Project:</b>	Control Systems
<b>Product:</b>	atvise® scada
<b>PLCs:</b>	Various
<b>Final customer:</b>	Various



The Herrmann GmbH is a specialized supplier of products and services in the field of building automation and air-conditioning.



## 2.8.3 Nossol Automatisations GmbH



<b>System Integrator:</b>	Nossol Automatisations GmbH
<b>Industry:</b>	Building Automation
<b>Project:</b>	Various
<b>Product:</b>	atvise® scada
<b>PLCs:</b>	Various
<b>Final customer:</b>	Various



Nossol Automatisations is a medium-sized company in the field of measurement and control automation with 40 employees and manufactures switchgears for building automation, process control and for engineering.

### 3 Energy: Customers & Projects



# Energy

### 3.1 Bachmann electronic GmbH – Wind Power Scada



**System Integrator:** Bachmann electronic GmbH

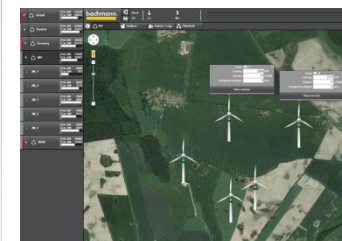
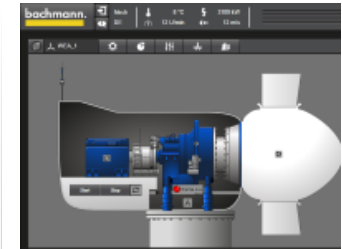
**Industry:** Wind Energy

**Project:** Wind Power Scada

**Product:** atvise® scada

**PLCs:** Bachmann

**Final customer:** Various



Feldkirch, Austria, Since 2012

Bachmann supplies amongst others high-availability automation solutions for wind turbines all over the world. With the new industry specific product "Wind Power SCADA" (WPS) a large number of wind farms can be monitored and controlled - locally independent, flexible, based on pure web technology and therefor future-proof.

This is made possible, as the implementation of WPS - an industry solution - is based on atvise® scada. The wind farm operator quickly receives a comprehensive overview of all wind farms and can interact with every single turbine device independently.

WPS is based on the functions of the Bachmann control software package Wind Turbine Template (WTT), which contains the most important structures, components and functions of the operational management control of a wind turbine, which is accessible in an IEC61400-25 structured data space. The consistent implementation based on OPC UA allows a seamless object-oriented engineering. Browsing and copying control content is thus very simple and a structured instantiation with a few mouse clicks feasible. This in turn reduces the overall engineering, development and start-up costs significantly.

## 3.2 Burkhardt GmbH



**System Integrator:** Burkhardt GmbH

**Industry:** Energy

**Project:** -

**Product:** atvise® scada, SDK and portal

**PLCs:** Beckhoff

**Final customer:** -



Germany, 2013

At the block-type thermal power stations (BTTPs) of Burkhardt GmbH in Mühlhausen, Germany, the existing Beckhoff visualization was replaced by atvise® scada. The plant controlling based on Beckhoff PLCs stays in place after refactoring.

atvise® scada, the plant controls as well as the Microsoft SQL Server for the plant configuration, data logging and portal connection are operating on a Beckhoff IPC.

After three days inhouse workshop the integration was done by the development department of the customer. The following features of atvise® scada are used: alarming, trending, user management and online language switching.

The switch to atvise offers several optimizations, e.g. the object oriented engineering of atvise® scada, which simplifies engineering and the maintainability. The plant controls and the SCADA are still switchable to multiple plant types.



### 3.3 Danfoss GmbH

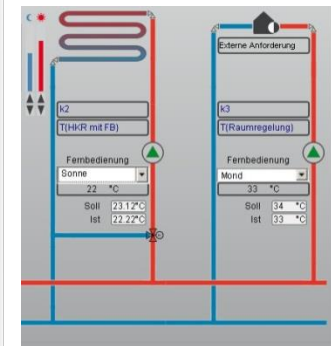
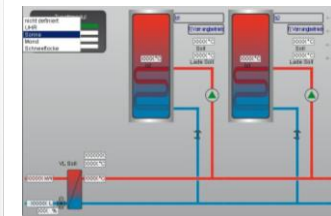


**System Integrator:** Danfoss GmbH  
**Industry:** Energy  
**Project:** Block heating stations  
**Product:** atvise® scada  
**PLCs:** -  
**Final customer:** Various



Austria/Denmark/Germany, since 2011

With atvise scada, Danfoss provides a direct access to its block heating stations via web for all customers. Danfoss offers a range of quality products and solutions used both in residential and commercial biomass boilers and in micro district heating networks. Danfoss supplies components for a wide range of biomass boilers and district heating systems, as well as complete solutions and services to help you control and monitor the entire district heating network.



### 3.4 Wien Energie GmbH

**System Integrator:** Wien Energie GmbH

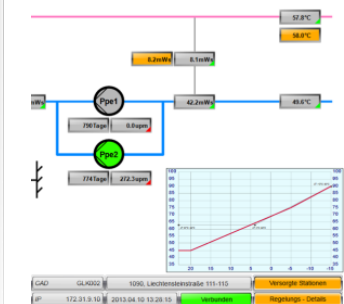
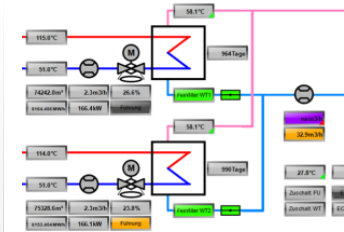
**Industry:** Energy

**Project:** Scada for district heating plants

**Product:** atvise® scada

**PLCs:** Saia

**Final customer:** Wien Energie GmbH



Vienna, Austria, 2010

Fernwärme Wien operates a huge district heating in the City of Vienna with about 2500 heat exchange stations. The task was to make monitoring, remote parameterization, powerful analysis as well as the control of these stations widely available for their employees.

The endless scalability of the visualization based on one single engineering process, offering HMI and SCADA functionality for the local displays at the stations, for standard Laptops/PCs at the work desks and in parallel remote access from tablets/smartphones, made this project a real success.

Conclusive also the atvise® licensing procedure is very supportive in such project setup.

### 3.5 Hoval AG



**System Integrator:** Hoval AG  
**Industry:** Energy  
**Project:** Control systems for district heating  
**Product:** atvise® scada / atvise® SDK  
**PLCs:** Hoval / Beckhoff  
**Final customer:** Hoval

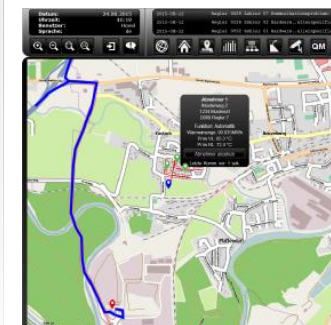
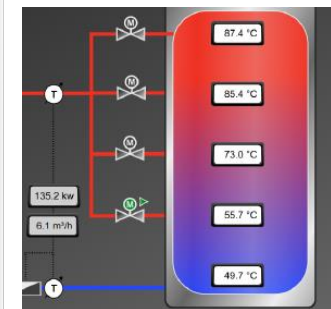
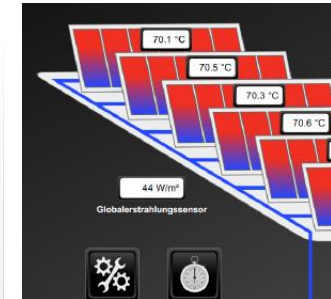


Vaduz, Liechtenstein, since 2013

The Hoval AG, based in Liechtenstein, is an expert in indoor climate technology. The range of Hoval includes integrated solutions in heating and cooling systems.

The reason for selecting the HMI / SCADA solution from Certec was that it was the only available solution on the market that is based on pure Web technology and OPC UA, and therefore fulfilled the requirement of open standards.

The project includes approximately 1.2 million data points and a daily historisation of up to 15 million data point information, which have to be handled successfully. For the engineering the "on the fly" generation of visualization was considered particularly valuable. Despite the high volumes of data, each station adjusts automatically and therefore reduced a great amount of configuration work. Overall, the project implementation with atvise solution is not just a necessary supplement, but certainly an enrichment of the existing Hoval portfolio.



### 3.6 Various Energy References

#### 3.6.1 Evonik GmbH



<b>System Integrator:</b>	Evonik GmbH
<b>Industry:</b>	Energy /Industrial Plants
<b>Project:</b>	Data Collection Systems
<b>Product:</b>	atvise® scada
<b>PLCs:</b>	Various
<b>Final customer:</b>	Various



Evonik is one of the world's leading specialty chemicals companies.

#### 3.6.2 Vizimax Inc.



<b>System Integrator:</b>	Vizimax Inc.
<b>Industry:</b>	Energy
<b>Project:</b>	Remote Management Solution
<b>Product:</b>	atvise® SDK
<b>PLCs:</b>	Various
<b>Final customer:</b>	Various



atvise webMI for RightWON – The Remote Management and Maintenance Solution for Energy and any other Industry.



## 4 Infrastructure: Customers & Projects



# Infrastructure

## 4.1 Automation 3000 AG



**System Integrator:** Automation 3000

**Industry:** Infrastructure

**Project:** Scada for fire detection system

**Product:** atvise® scada

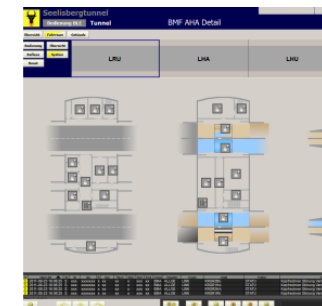
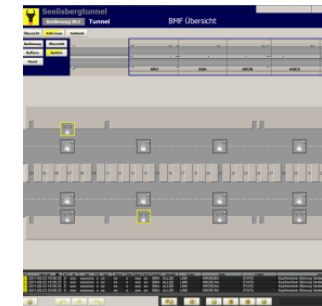
**PLCs:** Siemens

**Final customer:** Seelisberg Tunnel



Switzerland, 2009

The Seelisbergtunnel is part of the A2 motorway between the cantons of Uri and Nidwalden and is therefore an important part of the north-south axis of Switzerland. The company automation 3000 has implemented atvise scada for the mission critical fire detection system for the almost 10km (6 miles) long tunnel.



## 4.2 Indect Electronics GmbH



**System Integrator:** Indect electronics GmbH

**Industry:** Parking guidance system

**Projects:** Scada for car parks

**Product:** atvise® scada

**PLCs:** Various

**Final customer:** Dubai Mall



Austria, since 2007

Developed by the Emaar Malls Group, the 12.1-million-sq ft shopping mall in Downtown Burj Dubai is situated in close proximity to Burj Dubai, the world's tallest building.

To help guests find their destination among the 13.500 parking lots, Indect installed a parking guidance system based on atvise. In HMI displays with up to 1.400 dynamic elements, the operator can detect the status and occupancy of every single parking lot. In total the project consists of 1,5 million process variables

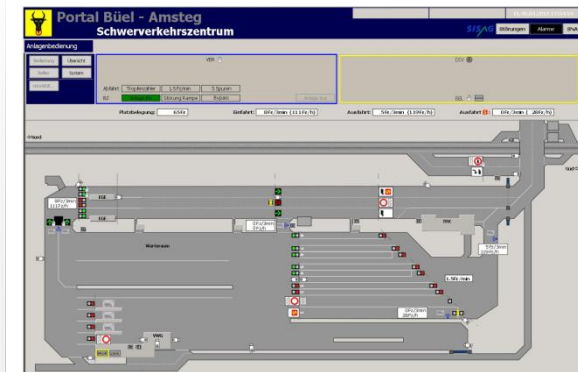


Area	Occupancy %	Occupied	Total	Free
05 FFM (F0 V12)	3%	3	100	96
06 FF (F0 F21)	54%	132	242	110
07 OFM (F0 F22)	11%	21	193	172
08 GF (F1 F8)	83%	495	591	96
09 LGM (F0 F8)	4%	14	322	308
10 LGF (F0 F4)	50%	122	245	123
CP3	30%	1197	3921	2724
01 RF (F0 F14)	4%	16	322	306
02 TF (F0 F17)	9%	43	479	436
03 OFM (F0 F4)	30%	25	79	54
04 BF (F2 F1)	22%	22	91	69
05 FFM (F0 F8)	34%	128	373	245
06 FF (F1 F6)	40%	104	259	155
07 OFM (F0 F0)	18%	10	54	44
08 OF (F14 F9)	74%	151	202	51
09 LGM (F0 F6)	38%	191	497	306
10 LGF (F13 F5)	40%	218	541	323

### 4.3 Sisag AG Altdorf



**System Integrator:** Sisag AG Altdorf  
**Industry:** Traffic Control  
**Project:** Heavy traffic centre Erstfeld  
**Product:** atvise® scada  
**PLCs:** Various  
**Final customer:** Various



Switzerland, 2009

Innovation partner for safe and high-availability process controls in passenger transportation, highway traffic tunnels, etc.

## 4.4 Various Infrastructure References

### 4.4.1 ACG Autcomp Grischa AG



<b>System Integrator:</b>	ACG Autcomp Grischa AG
<b>Industry:</b>	Infrastructure
<b>Project:</b>	Traffic Tunnels and Control Systems in CH
<b>Product:</b>	atvise® scada
<b>PLCs:</b>	Various
<b>Final customer:</b>	Various



In a modern automation project, complex contexts and many unknowns arise. The ACG has an extensive network in the field of automation and control technology to determine these unknowns.

### 4.4.2 Ascom GmbH



<b>System Integrator:</b>	Ascom GmbH
<b>Industry:</b>	Traffic Control
<b>Project:</b>	Maintenance for operation system for traffic tunnel
<b>Product:</b>	atvise® scada
<b>PLCs:</b>	Various
<b>Final customer:</b>	Various



#### 4.4.3 Marti Technik AG



**System Integrator:** Marti Technik AG  
**Industry:** Infrastructure  
**Project:** Traffic tunnels and Control Systems  
**Product:** atvise® scada  
**PLCs:** Various  
**Final customer:** Federal Roads Office CH - ASTRA



Marti Technik AG is one of the leading providers in the field of Electrical engineering. Electromechanical systems in the transportation infrastructure area represent the central control elements for the operation and the safety of road users.

#### 4.4.4 PKE GmbH



**System Integrator:** PKE GmbH  
**Industry:** Traffic Control / Tunnel Systems  
**Project:** Training System for traffic control plants  
**Product:** atvise® scada  
**PLCs:** Various  
**Final customer:** Various



Company in the field of safety, communication and building technology as well as traffic technology and facility management

## 5 Logistic: Customers & Projects



# Logistic

## 5.1 Assa Abloy Entrance Systems Germany GmbH

**System Integrator:** Assa Abloy  
**Industry:** Logistic  
**Project:** Loading Bridges and door shutters  
**Product:** atvise® scada  
**PLCs:** Various  
**Final customer:** Various



Germany, 2009

ASSA ABLOY Entrance Systems is an experienced provider around industrial doors and loading systems for the transport and logistics industry. From automatic doors to industrial doors, loading systems up to high-speed doors they are delivering automatic entrance solutions for every area of business.

With their large portfolio, they find exactly the right solution for every specific need.



## 5.2 Various Logistic references

### 5.2.1 Knapp AG



<b>System Integrator:</b>	Knapp AG
<b>Industry:</b>	Logistic
<b>Project:</b>	Scada system for warehouse logistic
<b>Product:</b>	atvise® scada
<b>PLCs:</b>	Various
<b>Final customer:</b>	Various



KNAPP AG operates internationally in the field of warehouse automation and warehouse logistics. The company is a global market leader among suppliers of intralogistic complete solutions and automated warehouse systems.

### 5.2.2 SSI Schäfer



<b>System Integrator:</b>	SSI Schäfer
<b>Industry:</b>	Logistic
<b>Project:</b>	Scada system for warehouse logistic
<b>Product:</b>	atvise® scada
<b>PLCs:</b>	Various
<b>Final customer:</b>	Various



SSI Schäfer is one of the world's largest total solutions providers and components manufacturer in the sectors Logistic systems, storage and conveying, workstation, logistics software and waste management technology.

## 6 Machinery & Plant Engineering: Customers & Projects



# Machinery & Plant Engineering

## 6.1 Alba Group

**System Integrator:** Alba Group  
**Industry:** Environment  
**Project:** Energy MGMT in Recycling  
**Product:** atvise® scada  
**PLCs:** Various  
**Final customer:** Various

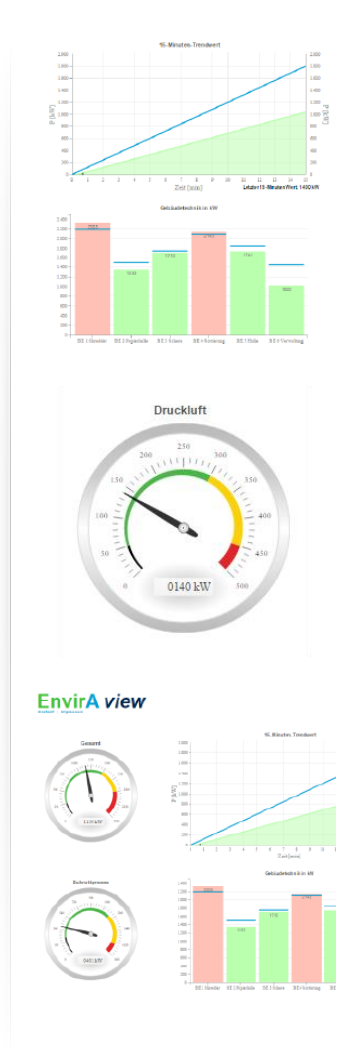


Germany, 2015

The ALBA Group operates within Germany, Europe, the U.S. and Asia. With an annual turnover of approx. 2.6 billion Euros (2013) and more than 8,000 employees ALBA Group is one of the leading recycling and environmental service companies as well as raw material providers worldwide.

The energy dashboard “Envira view”, developed by the ALBA Group on the basis of atvise®, captures the power consumption of the feed-in of the plant as of the main machinery and plant components. Following requirements for “Envira view” have been fulfilled by atvise®:

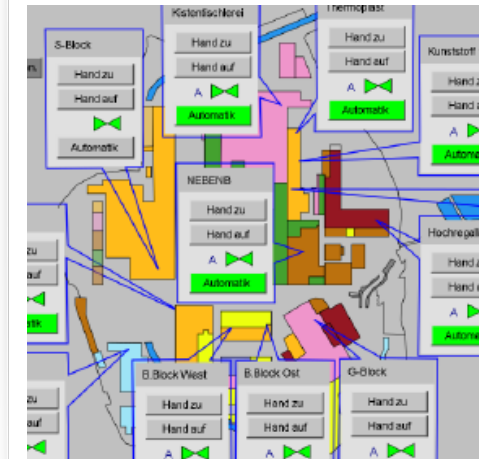
Modern engineering user interface, Multi-language, Scripting ability to implement mathematical algorithms, object-oriented library functions to build standardized representations, access via the latest browsers from different (operating) systems and no plugins or add-ons in the front end systems. The process connection happens via OPC UA and OPC Com. With regard to the reliability, a redundant solution is also needed. atvise® will be the first pure web HMI SCADA from version 3.0.



## 6.2 Andritz AG



**System Integrator:** Andritz AG  
**Industry:** Production Plants  
**Project:** Scada / mobile HMI via Blackberry  
**Product:** atvise® scada  
**PLCs:** Siemens  
**Final customer:** Various



Austria, 2010

The ANDRITZ GROUP is a global market leader for customized plant, systems and services for hydropower, the pulp and paper, steel and other specialized industries (solid/liquid separation, feed and biofuel). The group operates on a worldwide basis with its headquarters in Graz, Austria and has about 14.300 employees worldwide.

The project started with a monitoring and remote maintenance trial of all plant and production facility machinery - cooling water pumps, air compressors and boiler systems - on the premises of Andritz AG in Graz (Austria). Here atvise proved its reliability in connecting to Andritz plant machinery basically via any web browser - independently of which PC/standard laptop or smartphone (including the Blackberry Torch) being used. This allowed Andritz to integrate maintenance & support technicians, which are working on Andritz Industrial equipment around the globe, to react on local support issues in Graz.

In a next step atvise will control and monitor the complete building automation of the Andritz plant in Graz. The advantages of the unique solution offering native web technology based visualization combined with sophisticated object-oriented programming have been again very convincing.

### 6.3 SAA Engineering GmbH



**System Integrator:** SAA Engineering GmbH  
**Industry:** Production, mech. engineering  
**Project:** Scada for precast factories  
**Product:** atvise® scada  
**PLCs:** Various  
**Final customer:** Various

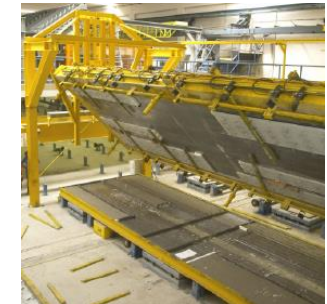


Austria, since 2011

SAA Engineering has been searching for a future-prove SCADA solution for automated precast factories, which are sold on world-wide bases.

The decision to source atvise® scada was based on four major requirements:

- Competitiveness through advanced technology: Pure web-based solution with visualization only through native web browser without any plugins.
- Graphical capabilities (SVG - vector graphics) and professional tools for GUI creation.
- The possibility to implement the solution into the existing engineering environment.
- The unproblematic connection to the Siemens S7 PLCs of the machinery: atvise® scada here is linked via a Softing OPC Server



## 6.4 Voith Paper GmbH & Co KG



**System Integrator:** Voith Paper GmbH & Co KG

**Industry:** Machine engineering

**Project:** Scada for paper machines

**Product:** atvise® scada

**PLCs:** Various

**Final customer:** Various

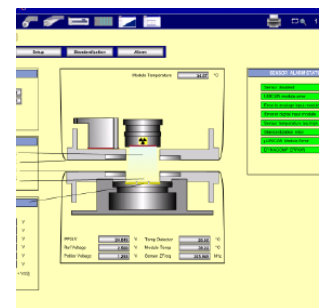
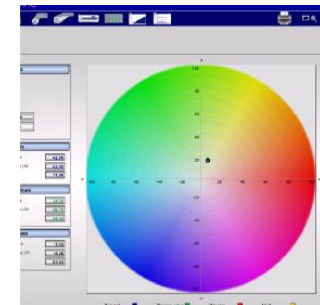
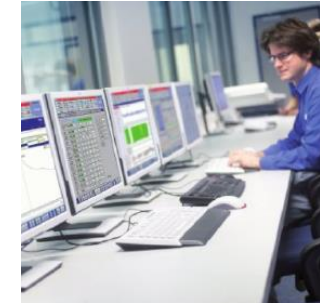


Germany, since 2008

Voith Paper is a division of Voith and the leading partner and forerunner of the paper industry. By constant innovation Voith Paper optimizes the production process of paper. The focus is on the development of resource saving products, to reduce the use of energy, water and fibrous materials.

Voith Paper equips their machines with atvise scada. One of the main reasons for the Voith Paper Automation group to decide for atvise was to reduce engineering costs on scada programming.

The object-oriented engineering possibility of atvise scada, which has been realized based on the OPC UA standard, allows to work with types and objects rather than with inefficient data point lists between the automation and the control level of the machinery. In addition atvise handles huge amounts of data-points masterfully, what is crucial in this process environment. The possibilities that a pure web based visualization provides as well as the advantages of having access and control through any device equipped with a standard browser – PC or mobile – without any additional plugins finally convinced Voith Paper completely.



## 6.5 Various Machinery & Plant Engineering References

### 6.5.1 Backhus GmbH



<b>System Integrator:</b>	Backhus GmbH
<b>Industry:</b>	Industrial Plants
<b>Project:</b>	Compost Works
<b>Product:</b>	atvise® scada
<b>PLCs:</b>	Various
<b>Final customer:</b>	Various



As the world's leading manufacturer of professional composting, waste treatment and soil remediation solutions, their concepts for plant and machinery providing logical, long-term solutions for the treatment of waste are in operation the world over.

### 6.5.2 Franke GmbH



<b>System Integrator:</b>	Franke GmbH
<b>Industry:</b>	Production
<b>Project:</b>	Machine Monitoring
<b>Product:</b>	atvise® scada
<b>PLCs:</b>	Various
<b>Final customer:</b>	Various



Franke is a world leading provider of products and solutions for residential kitchens and bathrooms, professional foodservice, coffee preparation and semi-/public washrooms.

## 7 Oil & Gas / Mining: Customers & Projects



# Oil & Gas



### 7.1 EEP – Elektro Elektronik Pranjic



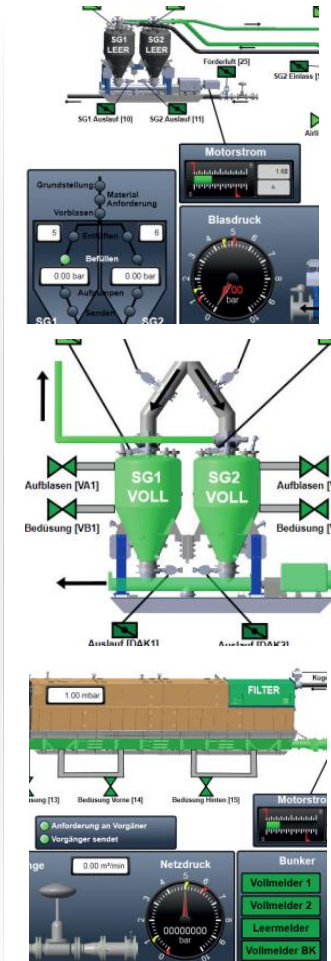
**System Integrator:** EEP  
**Industry:** Mining  
**Project:** Colliery in China  
**Product:** atvise® scada  
**PLCs:** UDP 200  
**Final customer:** China



Germany/China, 2013

The range of EEP’s products includes fully automated electro-hydraulic longwall control systems including all the associated hydraulics, high-performance data transfer systems, modern safety features and complex control systems for machines of all types. A large variety of couplers allow external components to be easily integrated into an overall system and for data to be archived and visualised.

The tunnels of an underground coal mine have to be protected by spraying or filling the walls with construction material. Oven dry mixture is stored above ground in central bunkers and is pneumatically conveyed through pipes and points to various outlets in the underground. On site workers add water to the building material mixture and mix both with large agitator. This material is then injected by pumps on request, for example on wired mesh attached to the walls in order to secure the mountain.



## 7.2 Offshore Systems



**System Integrator:** Offshore Systems  
**Industry:** Oil & Gas  
**Project:** Scada for offshore industry  
**Product:** atvise® scada  
**PLCs:** Siemens S7 300/400  
**Final customer:** Halliburton

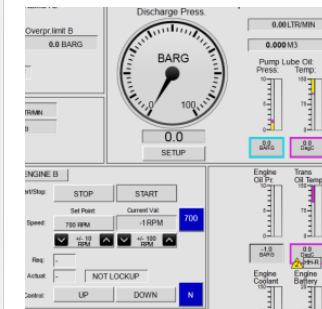
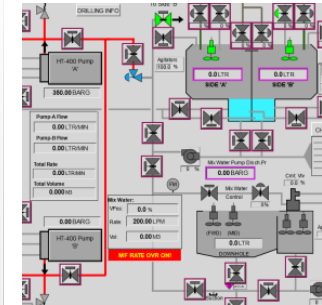


Norway, since 2012

The systems offered by the Norwegian company Offshore Systems are controlled by atvise scada and therefore part of many different projects/systems delivered around the world.

In this specific project for the client Halliburton, one of the world largest service companies to the oil and gas industry, the Offshore Systems Remote Control, OSRC is an additional system to improve the work environment. This is done in normal operation for the operators with respect to noise and to move the operator from the cement unit during pressure testing. Offshore Systems fully controls the unit, both with diesel, or electrical drive as well as the Cement Mixing Auto Density and Chemical Additives unit.

“The overall purpose is to make concrete around the casing of a drilling hole. This casing consists of steel pipes that are lowered down into the respective hole.



## 8 Water & Wastewater: Customers & Projects



# Water & Wastewater

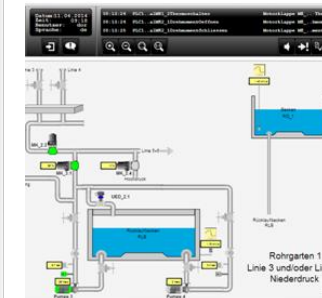
## 8.1 Demont Engineering GmbH



**System Integrator:** Demont Engineering  
**Industry:** Water/Wastewater  
**Project:** Valve testing area  
**Product:** atvise® webMI2ADS  
**PLCs:** Beckhoff  
**Final customer:** Valve vendor



Visualization and controlling of a valve testing area with an atvise® webMI2ADS HMI running on a Beckhoff CX5010. All relevant data is visualized on touch panels as well as on mobile tablets and can be controlled separately. Occurring alarms and alarm descriptions are displayed in an alarm list on the panels too.



8.2 Ellab d.o.o.

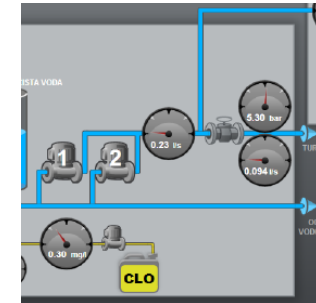
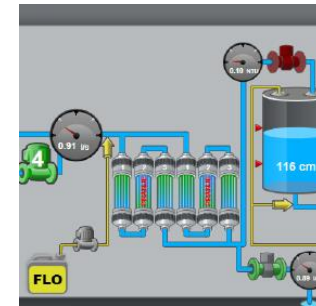
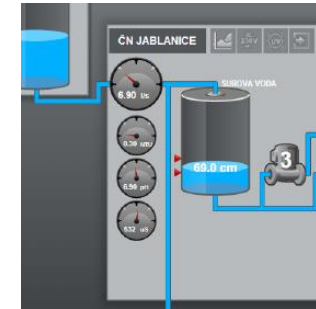


**System Integrator:** Ellab  
**Industry:** Water/Wastewater  
**Project:** Water system supervision  
**Product:** atvise® scada  
**PLCs:** TBOX (Semaphore)  
**Final customer:** KP Velenje, d.o.o. Slovenia



Ellab is a leading application company in Slovenia in automation and supervision of water and wastewater systems. Ellab built for the customer KP Velenje a system of pump stations and water reservoirs with over 60 remote stations as well as three water treatment plants. In a system with over 4.000 tags Ellab managed to realize real time data exchange over various communication media. Within the water company organization, atvise scada is used in a central supervision room (water plant location), in several offices all over the company and through mobile phones in the field.

»Pure web technology based scada and there for supporting the capability of working on any device was one of the decision making factors«, said Primoz Roser, the Water Division manager of KP Velenje.



### 8.3 Endress + Hauser



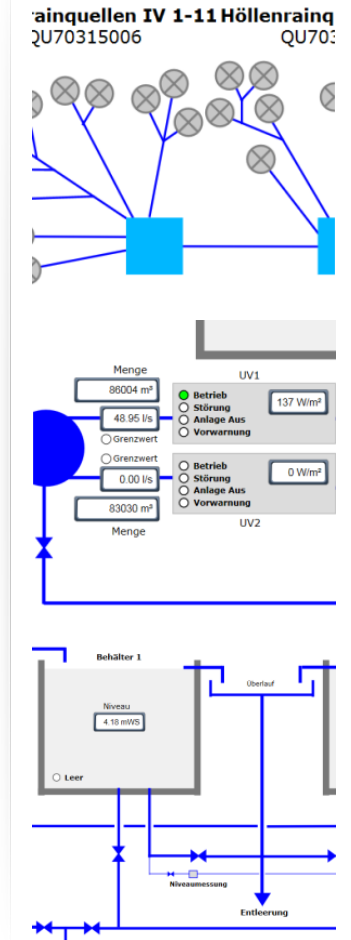
**System Integrator:** Endress + Hauser  
**Industry:** Water/Wastewater  
**Project:** Water supply Kematen  
**Product:** atvise® scada  
**PLCs:** Mitsubishi  
**Final customer:** Municipality



Austria/Switzerland/Germany, 2011

At the retrofit project of the water supply for the Austrian Town Kematen, atvise scada was integrated by Endress + Hauser as the overall HMI/SCADA interface.

The project consists of three supply units which are controlled separately and atvise scada provides remote and local control for the water supply service department as well as to the municipality. While the municipality has only observation status, the water supply service department can intervene accordingly within the process. Access is device independently - laptops, tablets or smartphones, etc. Any device with a web browser can connect to the HMI due to the fact that the solution is based on native web technology.



### 8.4 KSC GmbH and RHC Automation with Water Association Wulkatal



**System Integrator:** KSC GmbH + RHC Automation

**Industry:** Wastewater

**Project:** Scada for wastewater

**Product:** atvise® scada

**PLCs:** Beckhoff

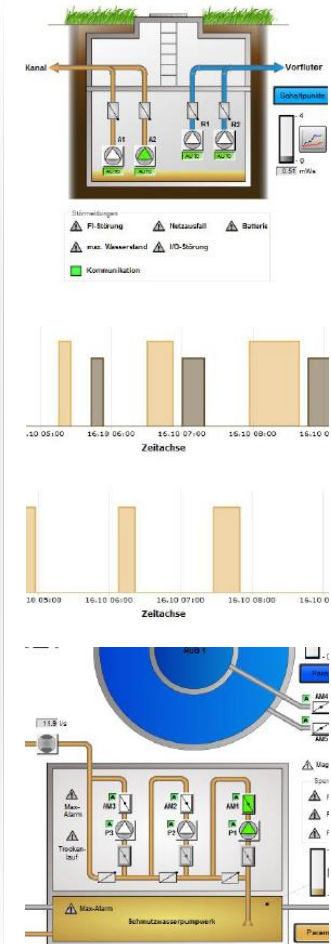
**Final customer:** Water Association Wulkatal



Austria, 2015

The Water Association Wulkatal, in Burgenland / Austria, replaced the existing SCADA system against an atvise® scada. The Project included 13 water transition buildings and pumping stations of the association. The existing plant controls were replaced by Beckhoff controllers, which were coupled via OPC -UA directly over the broadband connections with the atvise® scada. The object-oriented engineering in combination with OPC UA enables efficient and fault reduced working - both in plant engineering as well as in commissioning. The visualization in pure web technology coupled with the licensing philosophy of atvise® scada provides maximum flexibility when setting up new operator and monitoring stations at headquarters as well as the access through technician laptops, etc. in the field.

The programming of the new outstations and the engineering of the atvise® scada was provided by RHC automation. A completely new communication concept for the connection of external stations was implemented by the company KSC GmbH, with the latest in communication technology such as SHDSL, WiMAX , UMTS , etc.



## 9 Various: Customers & Projects



# Various



## 9.1 Bachmann webMI Pro

**bachmann.**



**System Integrator:** Bachmann electronic GmbH

**Industry:** Various

**Project:** Various

**Product:** atvise® sdk

**PLCs:** Bachmann M1

**Final customer:** Various



Austria, Since 2012

Bachmann electronics GmbH offers with its visualization software webMI pro, which is available in combination with the Bachmann M1 controller, an elegant and sophisticated solution based on the atvise® sdk. The integration with the powerful M1 controller demonstrates the performance of modern web technologies. When viewing a visualization screen of M1 webMI pro the exceptional advantages of HTML5 and SVG (Scalable Vector Graphics), the basis of the graphical objects, are immediately visible. Zooming and resizing is done without any loss of quality - perfect graphical results are delivered.

The summarized USPs of the webMI pro visualization of the M1 controller are as follows:

- Seamless integration into existing Bachmann tools
- Adaptions in the visualization server
- webMI extension for e.g. maintenance purposes: file transfer over HTTP (S), PUT / GET performed between client and server - the M1 control is not needed and stays untouched
- Powerful alarm handling with localizable text, alarm configuration on individual bits of a variable and complex alarm conditions



## 9.2 Hilscher Ges. Für Systemautomation mbH



**System Integrator:** Hilscher GmbH  
**Industry:** Various  
**Project:** atvise netLINK scada  
**Product:** atvise® sdk  
**PLCs:** Various  
**Final customer:** Various



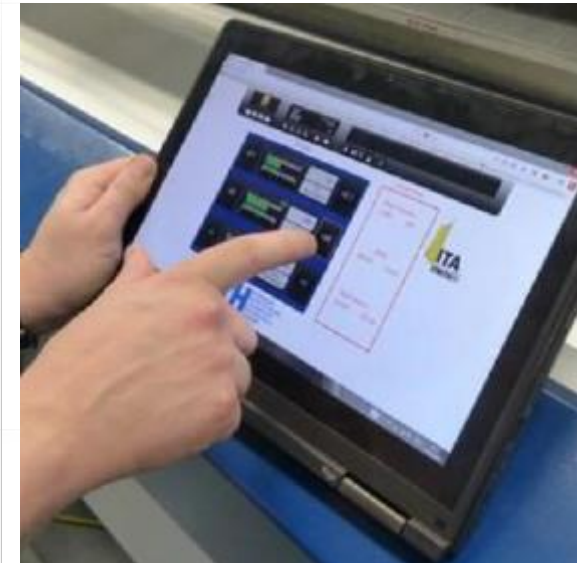
Germany, 2010

How small a webMI Server can be in order to visualize in pure web technology shows the NetLink SCADA plug from Hilscher impressively. Here atvise® has been integrated to visualize Siemens S7 and S7 compatible controllers.

### 9.3 ITA – Institute for Textile Technology and University Aachen



**System Integrator:** ITA & University Aachen  
**Industry:** Mechanical Engineering / Textile  
**Project:** Various  
**Product:** atvise® scada  
**PLCs:** Various  
**Final customer:** Various



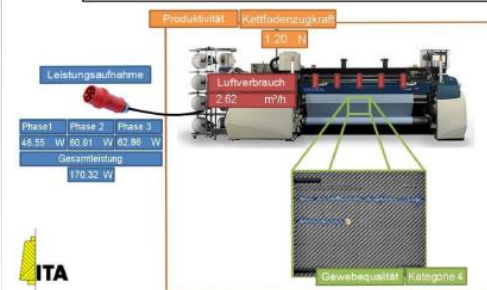
Germany, 2013

The RWTH Aachen, is with over 40,000 students the largest university for technical studies in Germany. The Institute of Textile Technology at RWTH Aachen (ITA) in turn, is - among others - evaluating the HMI and its customization options in the field of automation / Industry 4.0.

The project machinery is equipped with special sensors and actuators which are connected to a PLC. Via classic OPC the atvise® scada is connected, offering visualization through standard web browser. With atvise® scada personalized HMIs can be created. By assigning individual access rights for users and user groups, only authorized persons can carry out changes in the process. The learning curve in the operation of the machines is shortened because the HMI is customizable to every user. Thus, the machines can even be operated by inexperienced persons and the monitoring and control can be applied to other textile machines.

Accessibility over the Internet offers opportunities for remote maintenance as well as for efficient support in the case of machine failures. Direct access to the alarming, historization and the current machine parameters on an individual HMI provides a fast and effective support in the event of damage.

Mehrdimensionale Selbstoptimierung des Webprozesses



## 9.4 Various References

### 9.4.1 ILS Technology



<b>System Integrator:</b>	ILS Technology
<b>Industry:</b>	Various
<b>Project:</b>	atvise webMI HMI for deviceWise Solutions
<b>Product:</b>	atvise® sdk
<b>PLCs:</b>	Various
<b>Final customer:</b>	Various



As deviceWISE is a software Framework, that establishes an intelligent and save connection from plants to your company.

### 9.4.2 Nxt Control GmbH



<b>System Integrator:</b>	Nxt Control GmbH
<b>Industry:</b>	Various
<b>Project:</b>	atvise webMI for nxt Control
<b>Product:</b>	atvise® sdk
<b>PLCs:</b>	Various
<b>Final customer:</b>	Various



The world's leading IEC1499 PLC Solution. nxtControl offers all advantages of a controlling software to engineer allocated systems, based on IEC-61499 with an embedded atvise® webMI web server.

### 9.4.3 Softing AG

	<b>System Integrator:</b>	Softing AG	
	<b>Industry:</b>	Various	
	<b>Project:</b>	Data logging Visualization “echograph”	
	<b>Product:</b>	atvise® sdk	
	<b>PLCs:</b>	Various	
	<b>Final customer:</b>	Various	


Softing is provider of hardware and software for industrial automation and automotive electronics. 'echograph' combines data backup and data visualization in a single device

### 9.4.4 Vipa GmbH

	<b>System Integrator:</b>	Vipa GmbH	
	<b>Industry:</b>	Various	
	<b>Project:</b>	Pure web Touchpanel HMI	
	<b>Product:</b>	atvise® sdk	
	<b>PLCs:</b>	Various	
	<b>Final customer:</b>	Various	

Offers as atvise® OEM partner an optional webMI based solution on their panels.

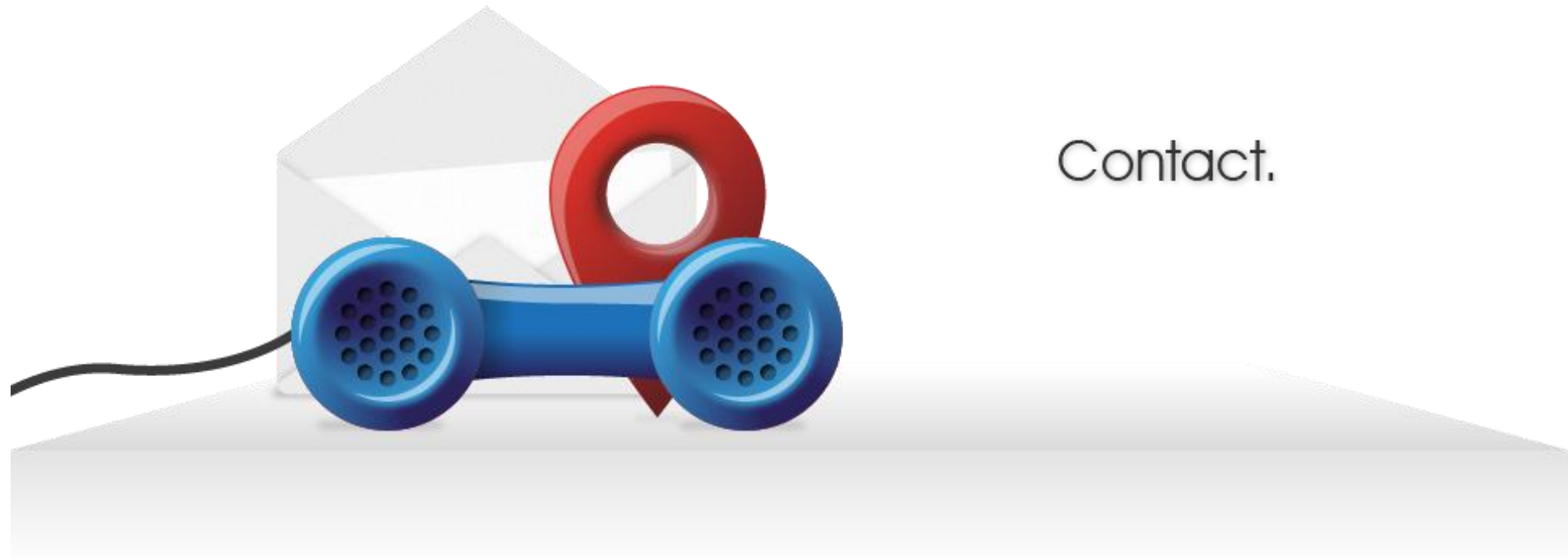
## 9.4.5 Weiermayer Solutions GmbH

	<b>System Integrator:</b>	Vipa GmbH
	<b>Industry:</b>	Various
	<b>Project:</b>	Pure web Touchpanel HMI
	<b>Product:</b>	atvise® sdk
	<b>PLCs:</b>	Various
	<b>Final customer:</b>	Various



Out-of-the-box GSM / UMTS / HSDPA solutions with process interface and embedded atvise® webMI web server. Connect to your plants and make use of the possibility to remotely control and maintenance worldwide and without roaming charges.

Contact.



**Certec EDV GmbH**

Kasernenstraße 29  
7000 Eisenstadt

**Tel.:** +43 2682 75799 - 0  
**Fax:** +43 2682 75799 - 5000  
**E-Mail:** [info@certec.at](mailto:info@certec.at)